

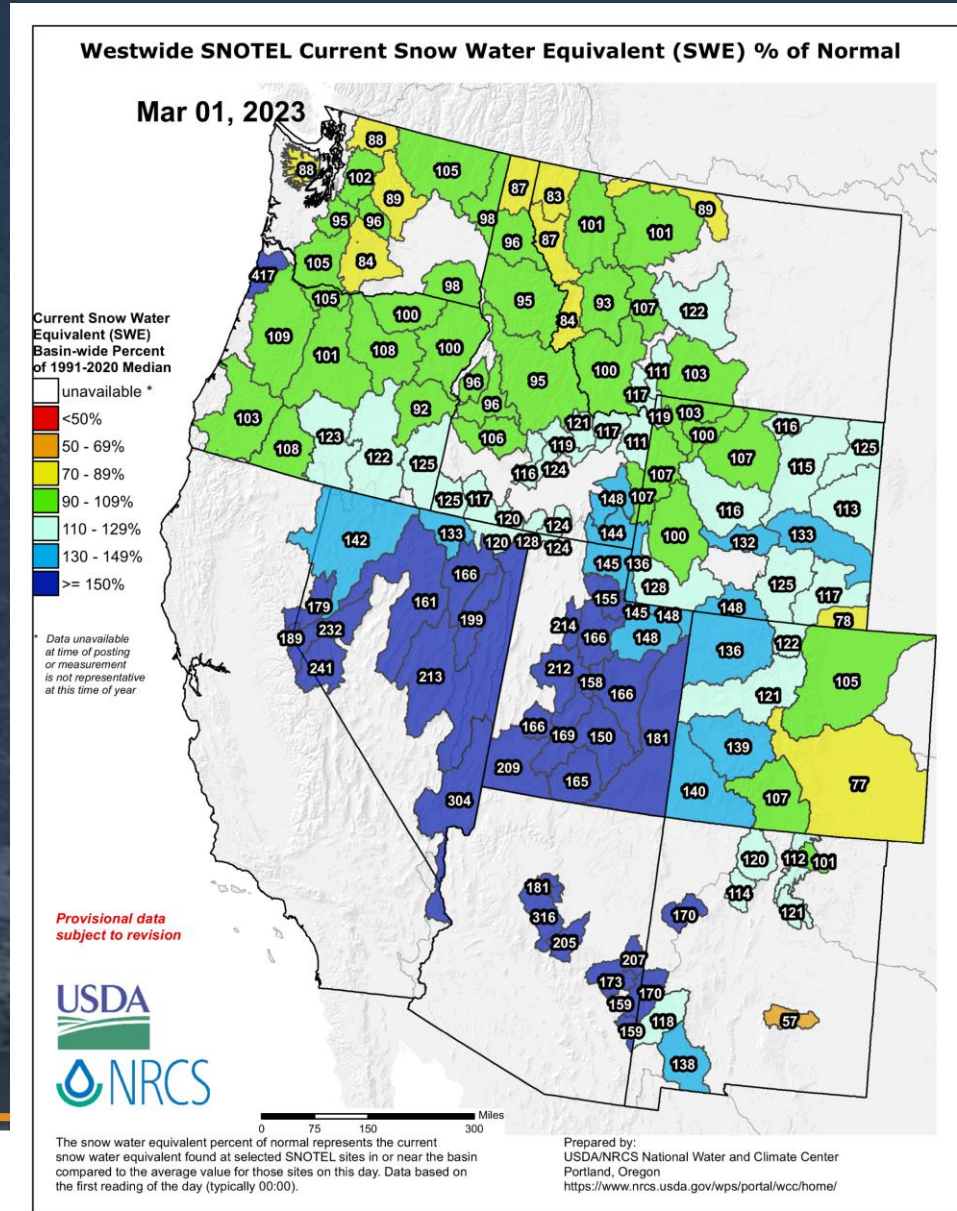
Animas Consolidated Ditch Company

Water Supply Outlook

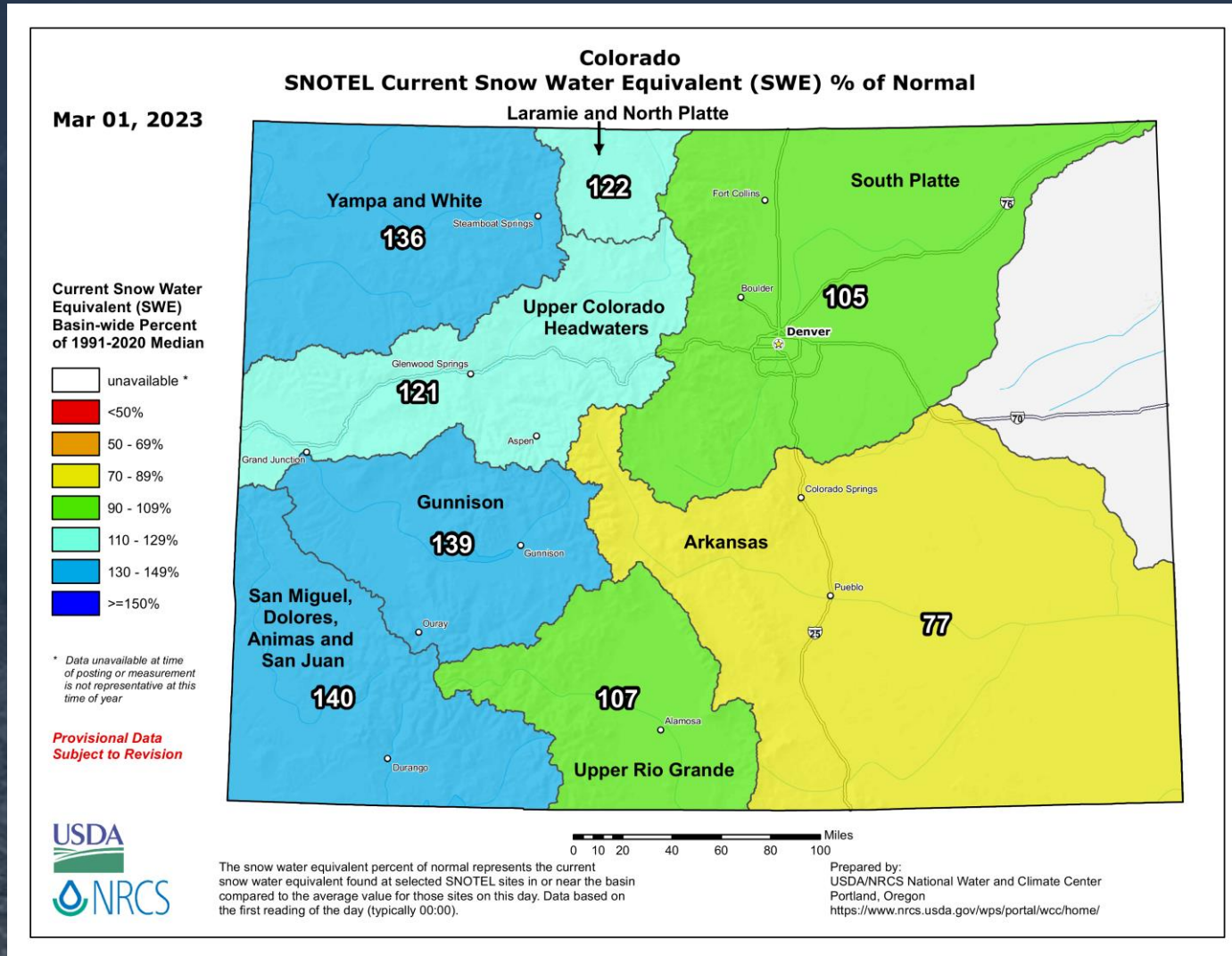
March 4, 2023

Eric Bikis
Principal Water Resources Consultant

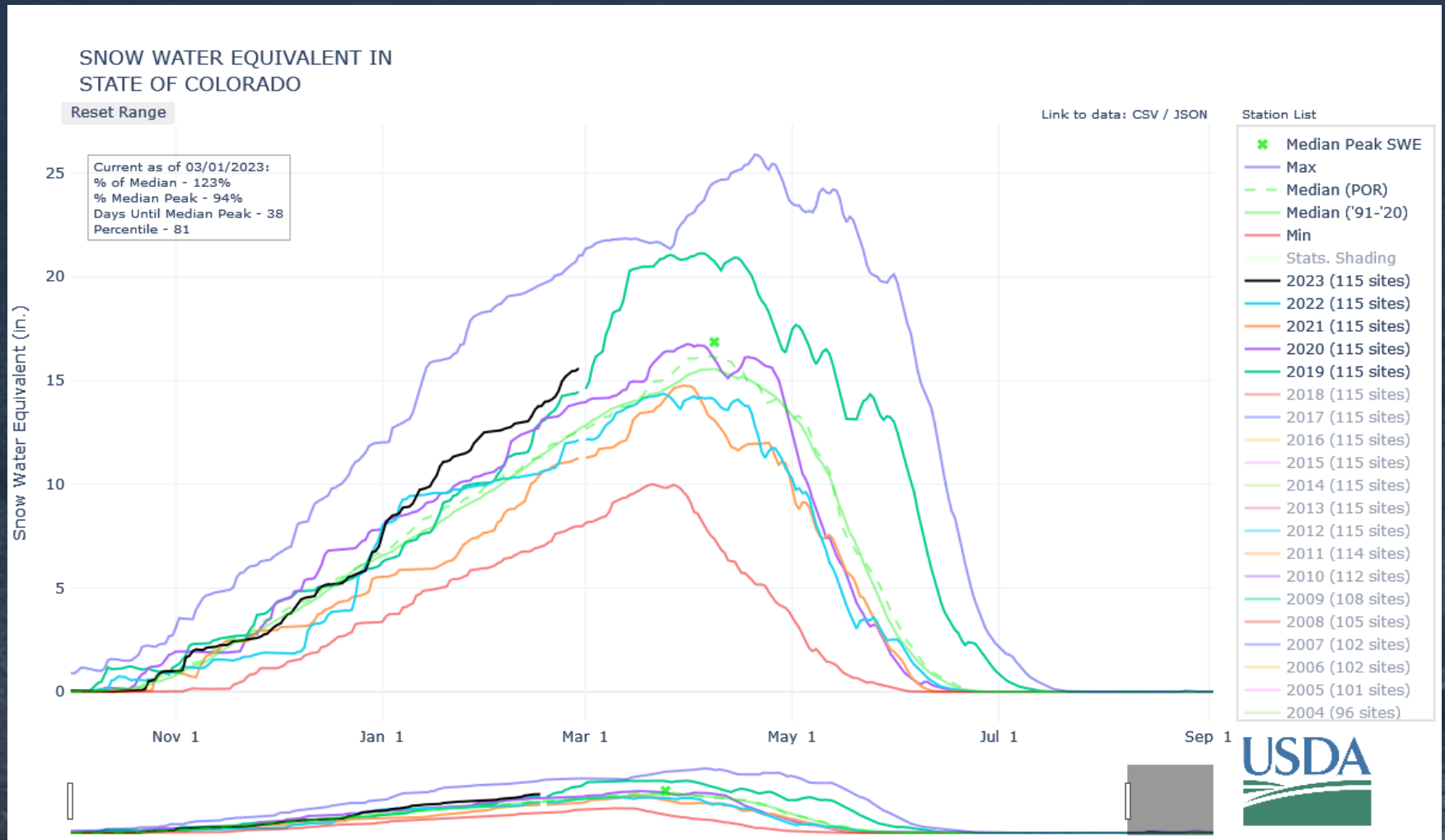
Westwide SNOTEL Current SWE % of Normal



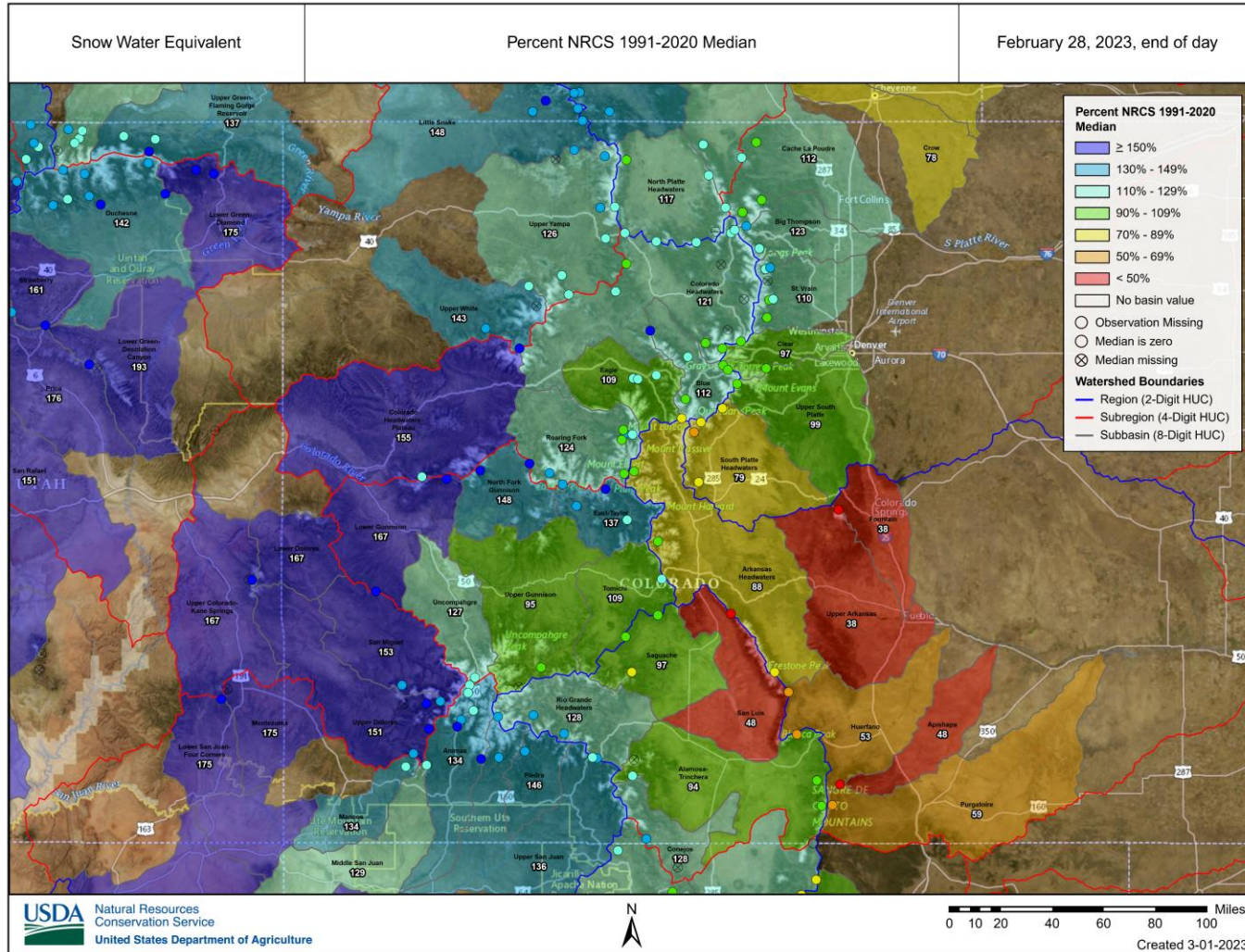
Colorado Current SNOTEL SWE % of Normal



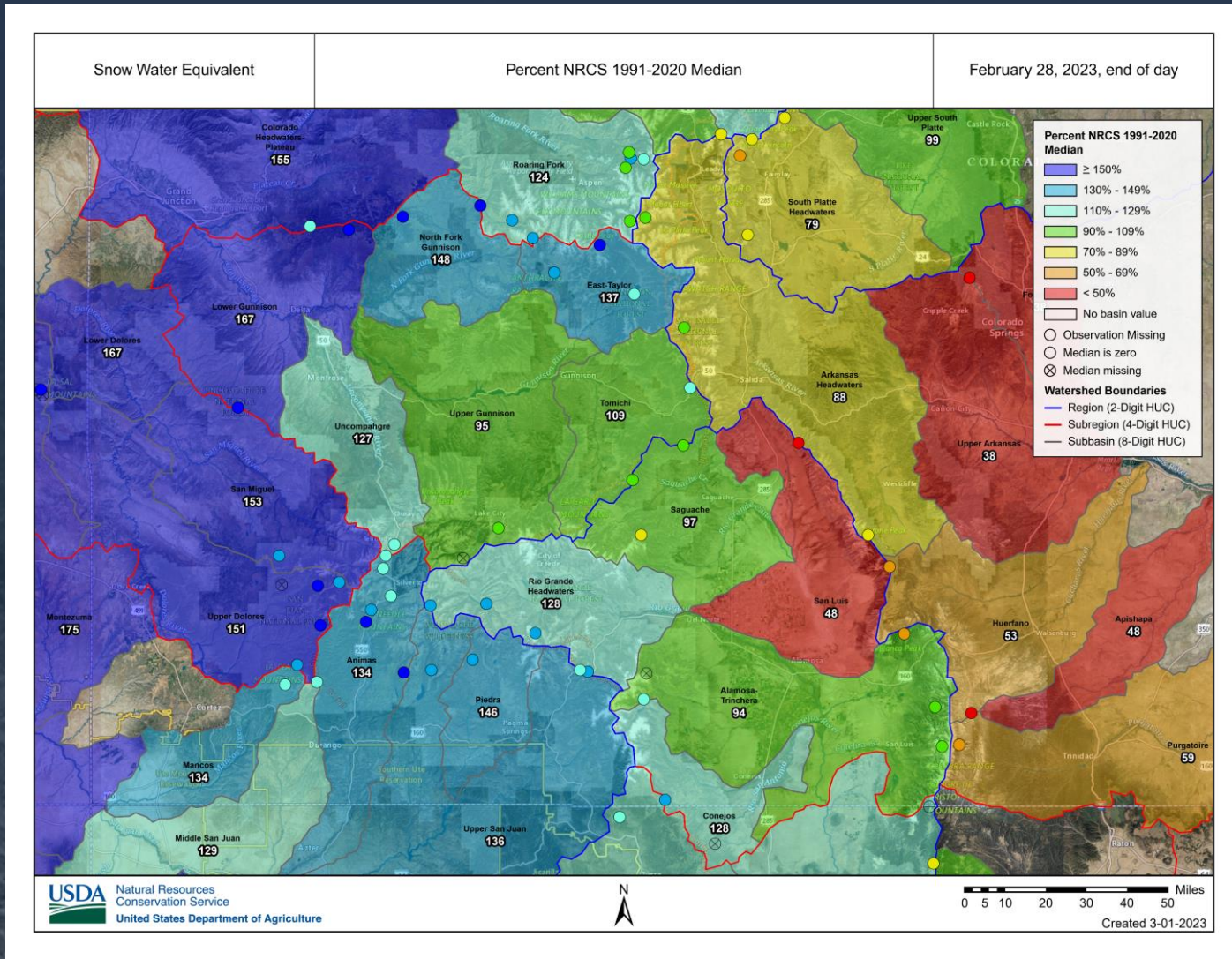
Colorado Statewide Time Series Snowpack



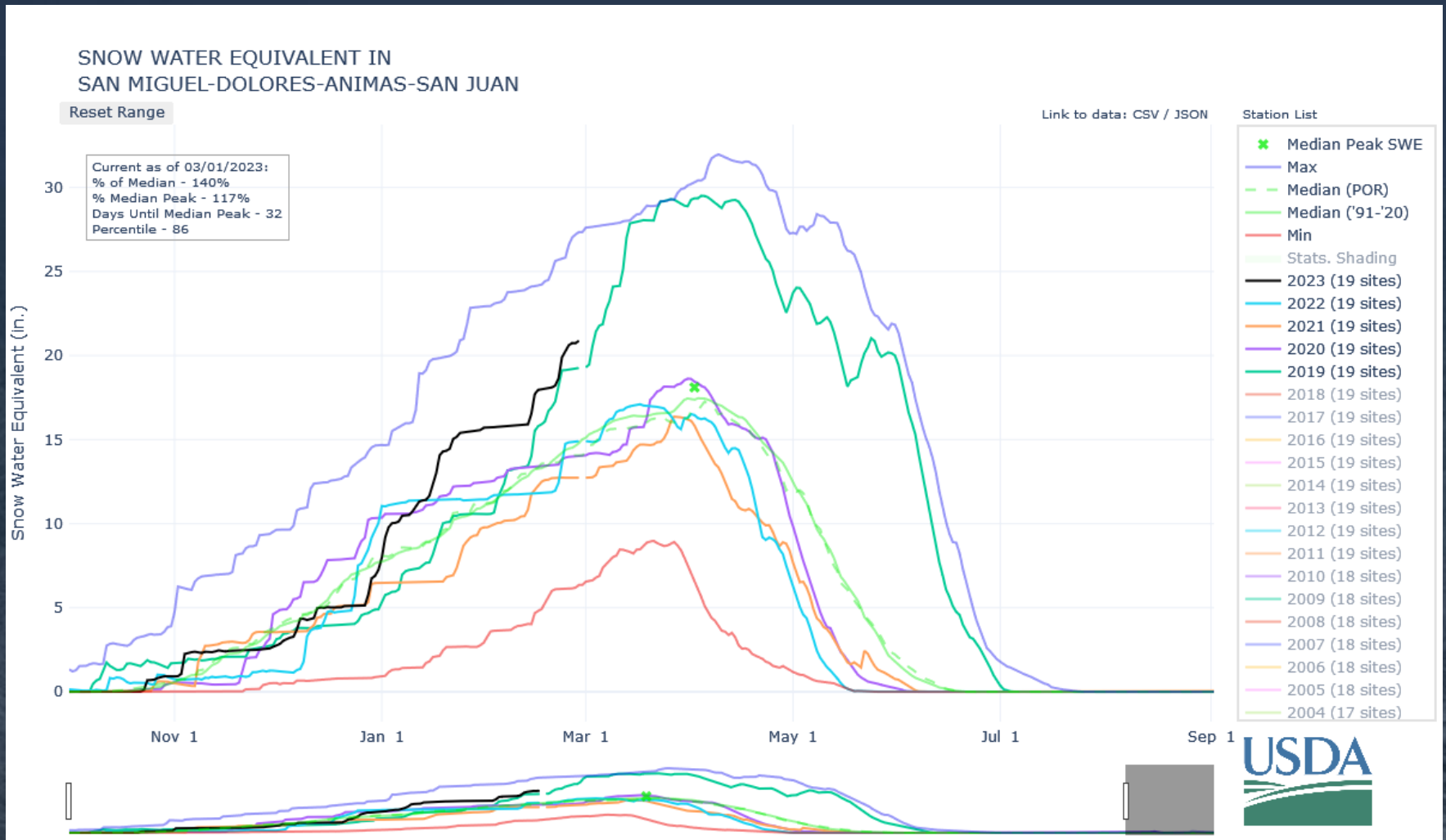
Snowpack and Streamflow Forecasts



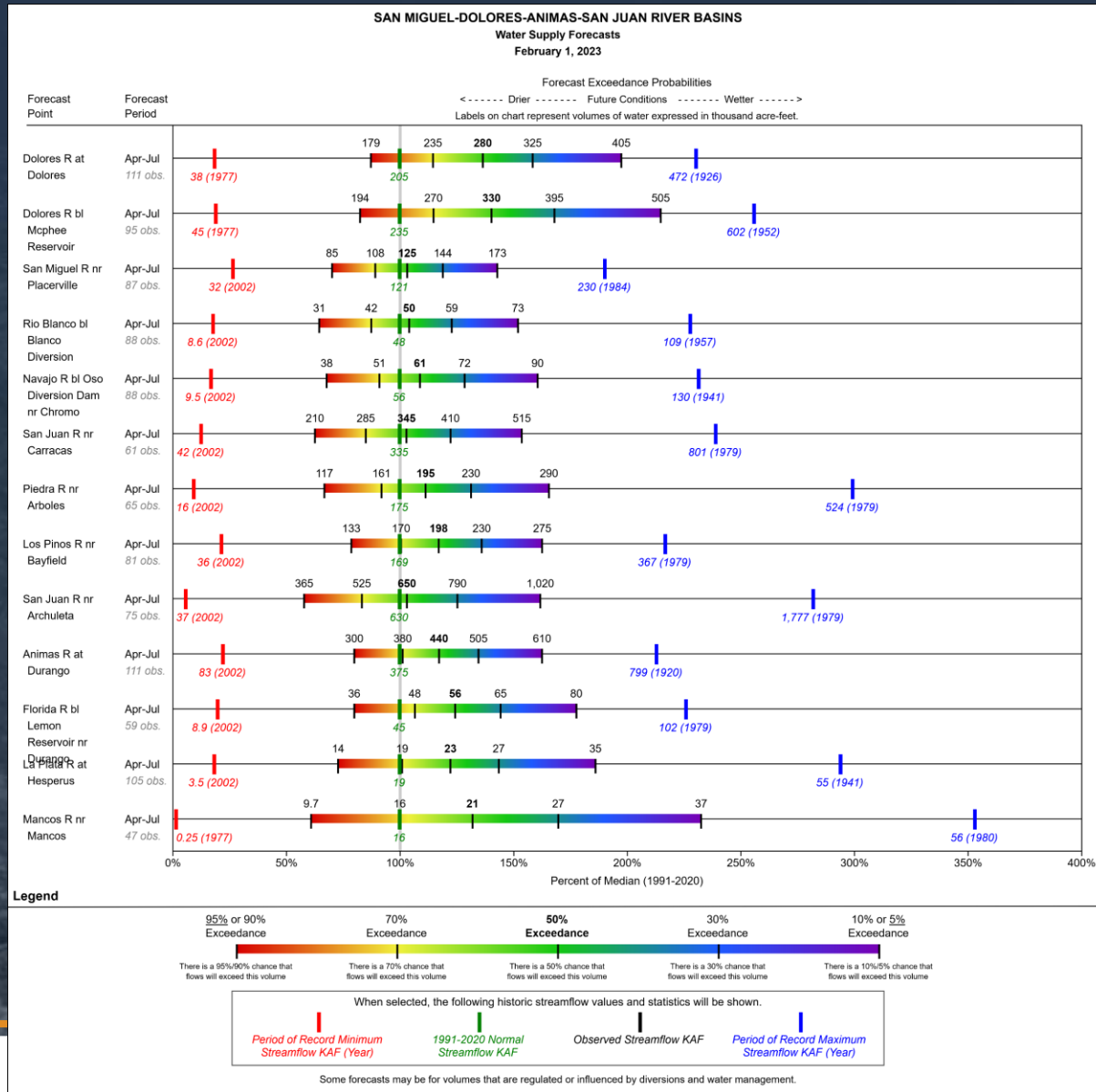
Snowpack and Streamflow Forecasts



Animas River Time Series Snowpack

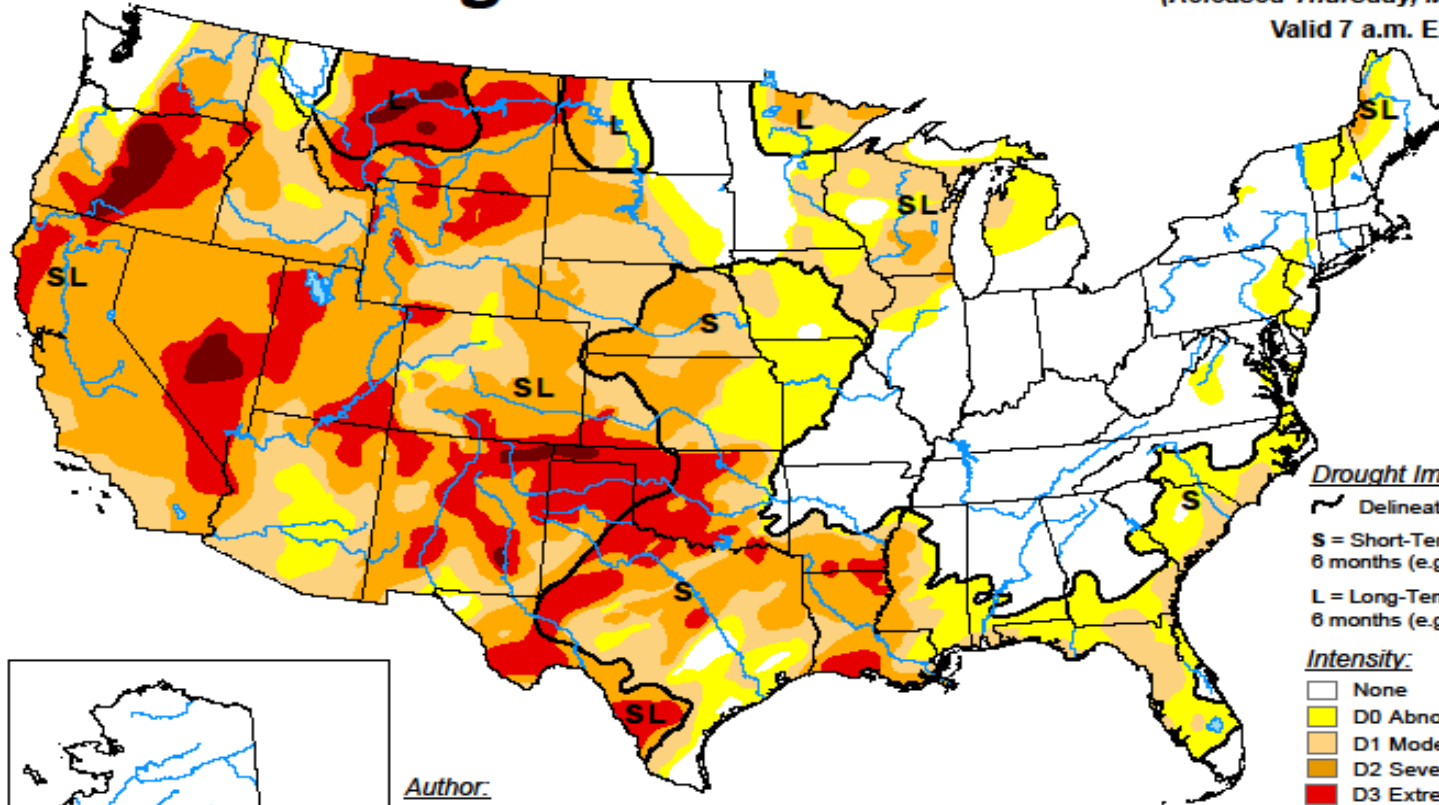


SW Colorado Water Supply Forecasts



U.S. Drought Monitor 2022

March 1, 2022
(Released Thursday, Mar. 3, 2022)
Valid 7 a.m. EST



Drought Impact Types:

- Delineates dominant impacts
- S** = Short-Term, typically less than 6 months (e.g. agriculture, grasslands)
- L** = Long-Term, typically greater than 6 months (e.g. hydrology, ecology)

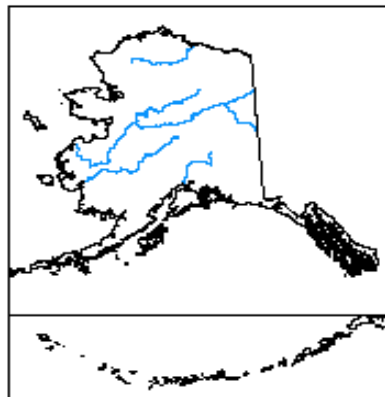
Intensity:

- None
- D0 Abnormally Dry
- D1 Moderate Drought
- D2 Severe Drought
- D3 Extreme Drought
- D4 Exceptional Drought

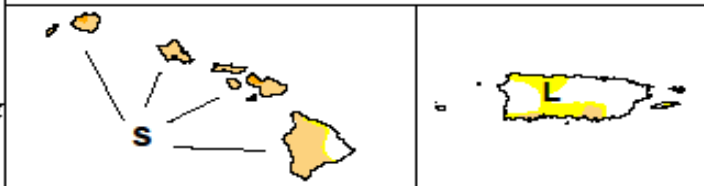
The Drought Monitor focuses on broad-scale conditions. Local conditions may vary. For more information on the Drought Monitor, go to <https://droughtmonitor.unl.edu/About.aspx>



droughtmonitor.unl.edu



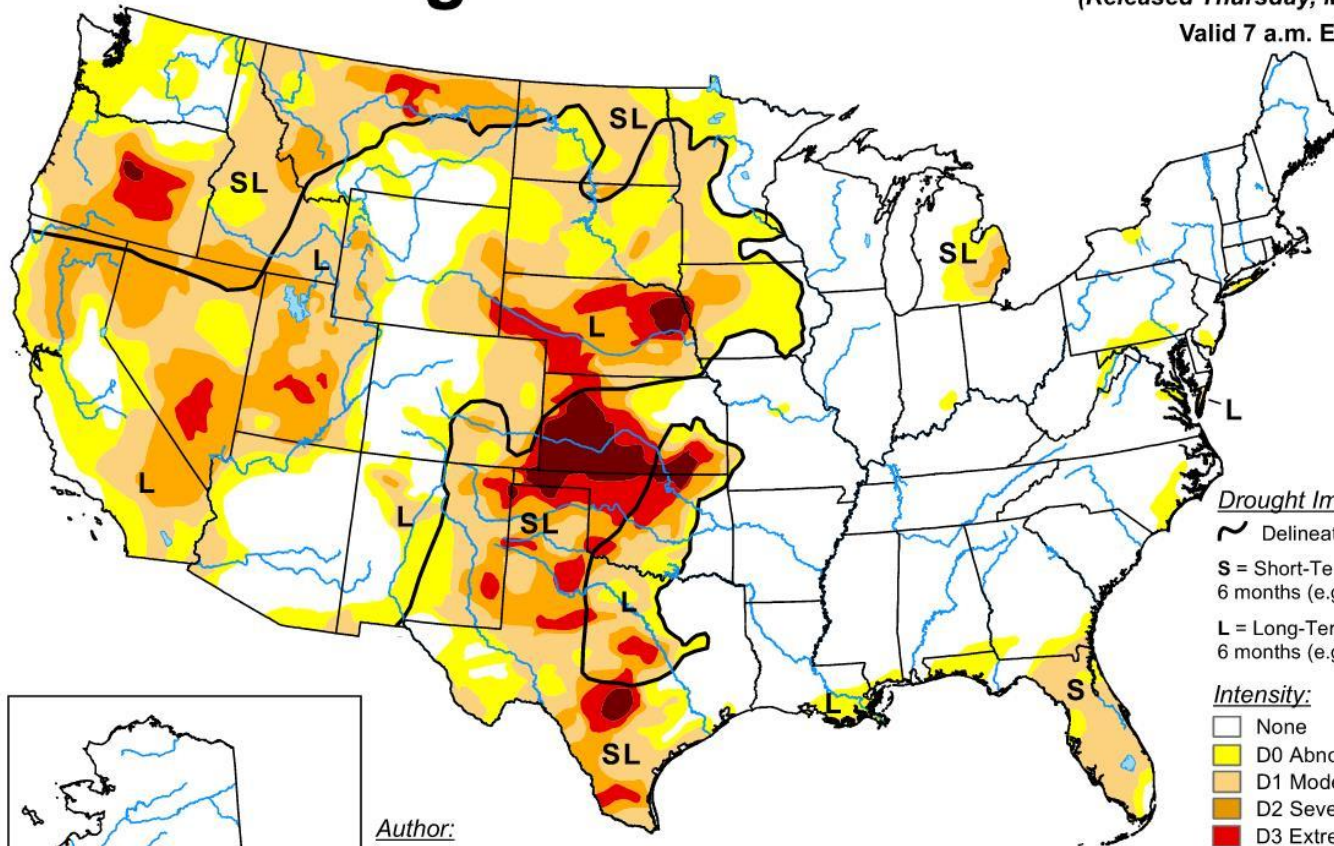
Author:
Brad Rippey
U.S. Department of Agriculture



U.S. Drought Monitor 2023

February 28, 2023
(Released Thursday, Mar. 2, 2023)

Valid 7 a.m. EST

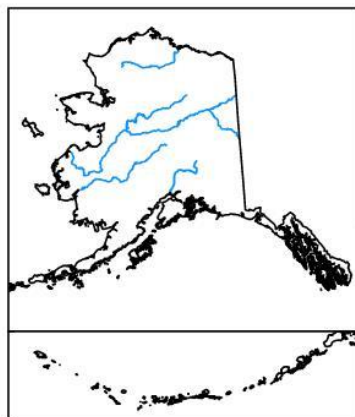


Drought Impact Types:

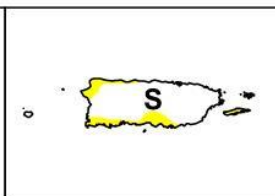
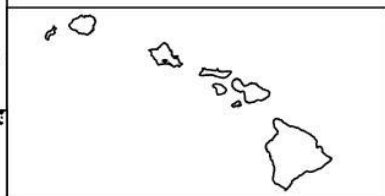
- ~ Delineates dominant impacts
- S** = Short-Term, typically less than 6 months (e.g. agriculture, grasslands)
- L** = Long-Term, typically greater than 6 months (e.g. hydrology, ecology)

Intensity:

- None
- D0 Abnormally Dry
- D1 Moderate Drought
- D2 Severe Drought
- D3 Extreme Drought
- D4 Exceptional Drought



Author:
Richard Heim
NCEI/NOAA



The Drought Monitor focuses on broad-scale conditions. Local conditions may vary. For more information on the Drought Monitor, go to <https://droughtmonitor.unl.edu/About.aspx>



droughtmonitor.unl.edu

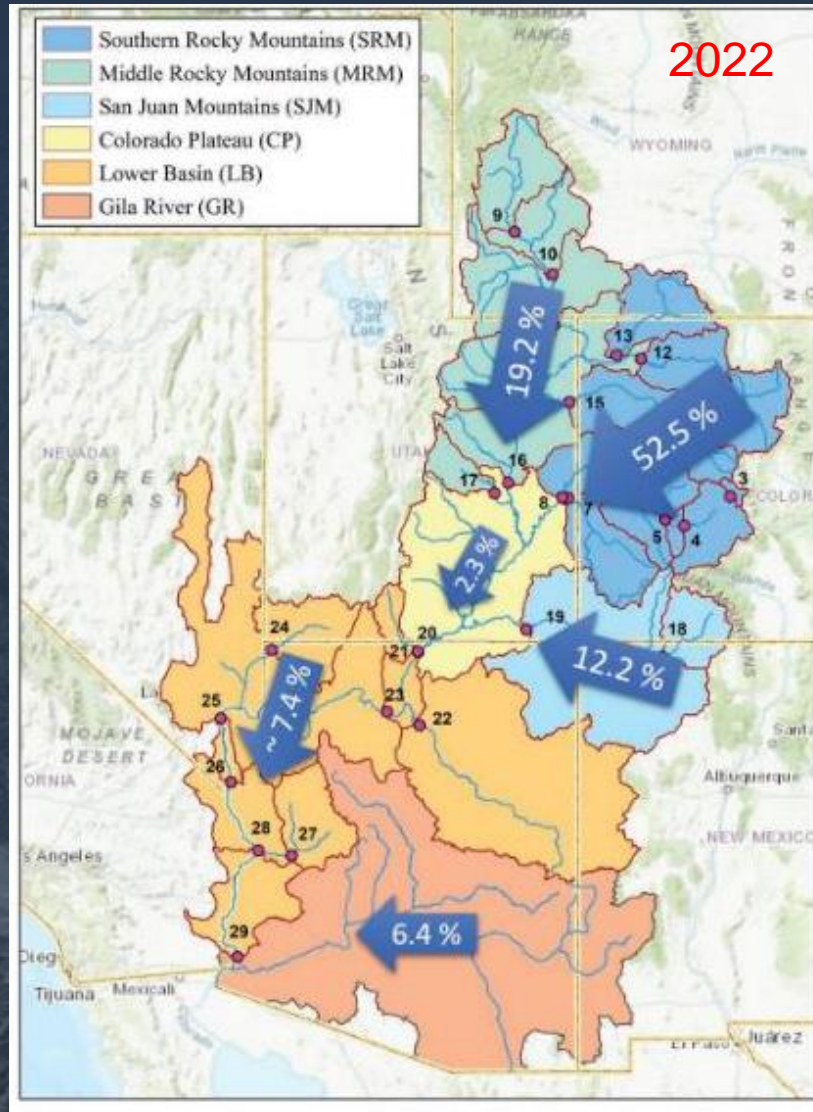
Colorado River Watershed



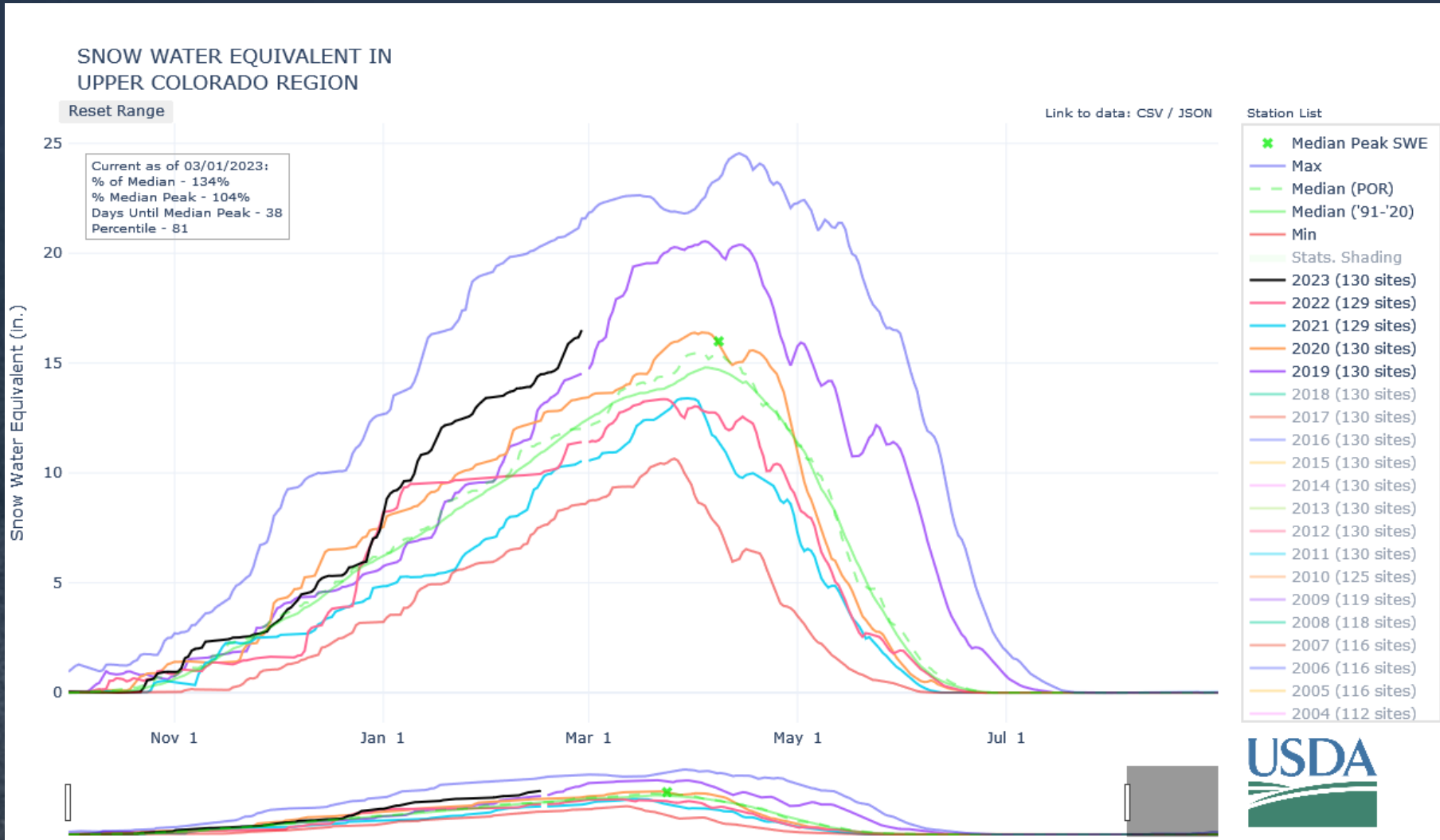
2022

Figure 1. Map showing the watershed, or hydrologic basin, of the Colorado River and areas beyond the watershed that are served by trans-basin diversions (adapted and revised from U.S. Bureau of Reclamation, 2012).

Colorado River Basin Cont.



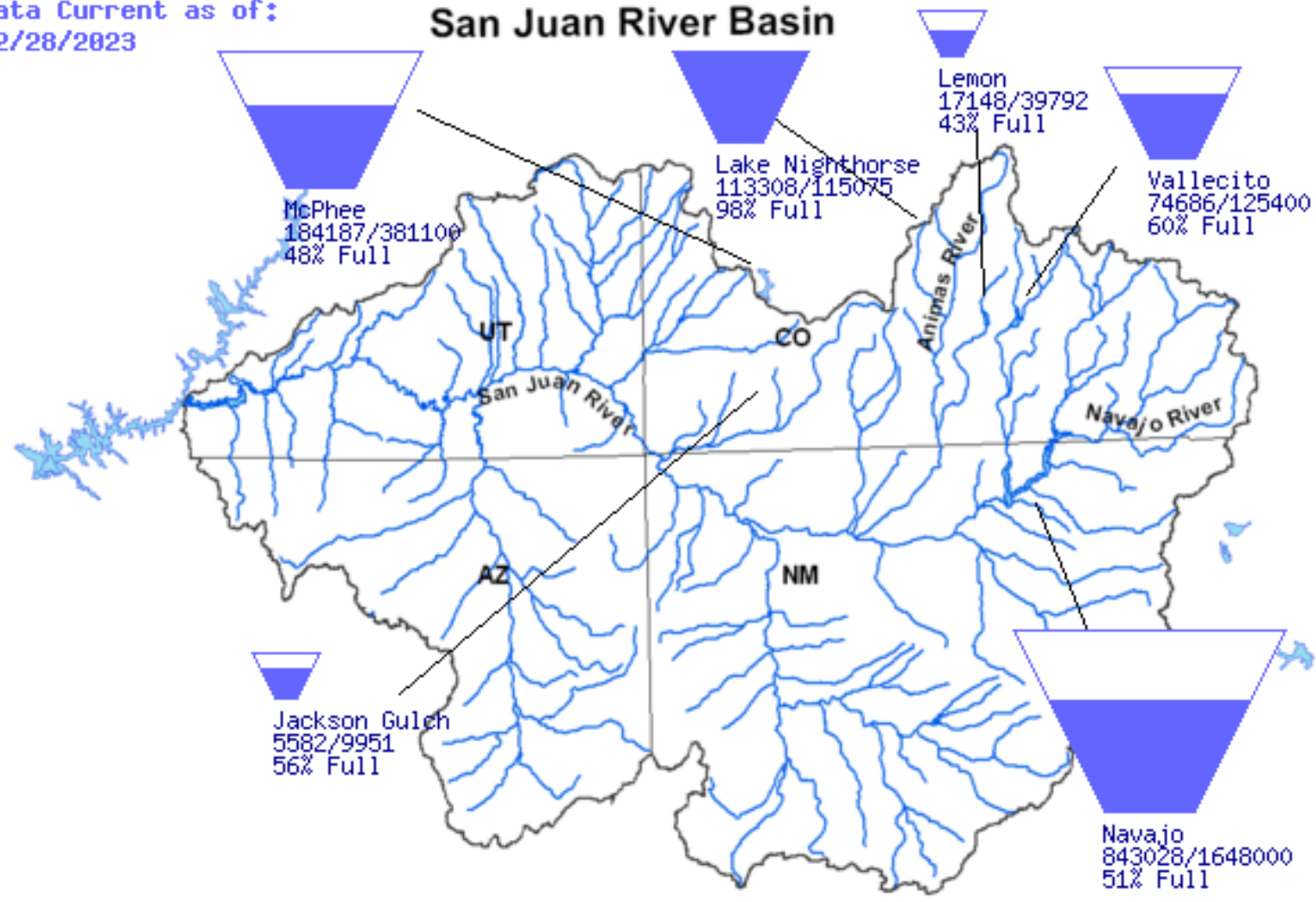
Upper Colorado Above Lake Powel (131 Sites) Time Series Snowpack



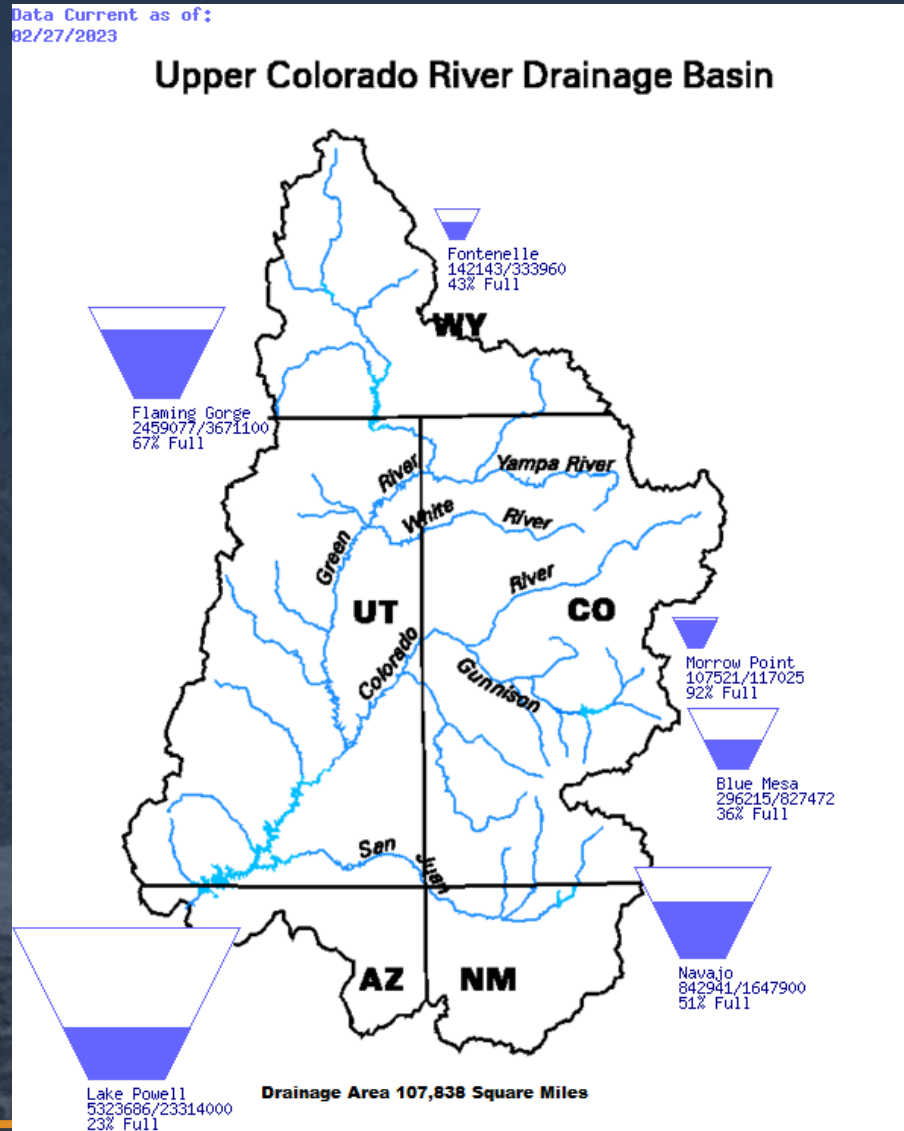
San Juan River Drainage Basin Tea Cup Diagram

Data Current as of:
02/28/2023

San Juan River Basin



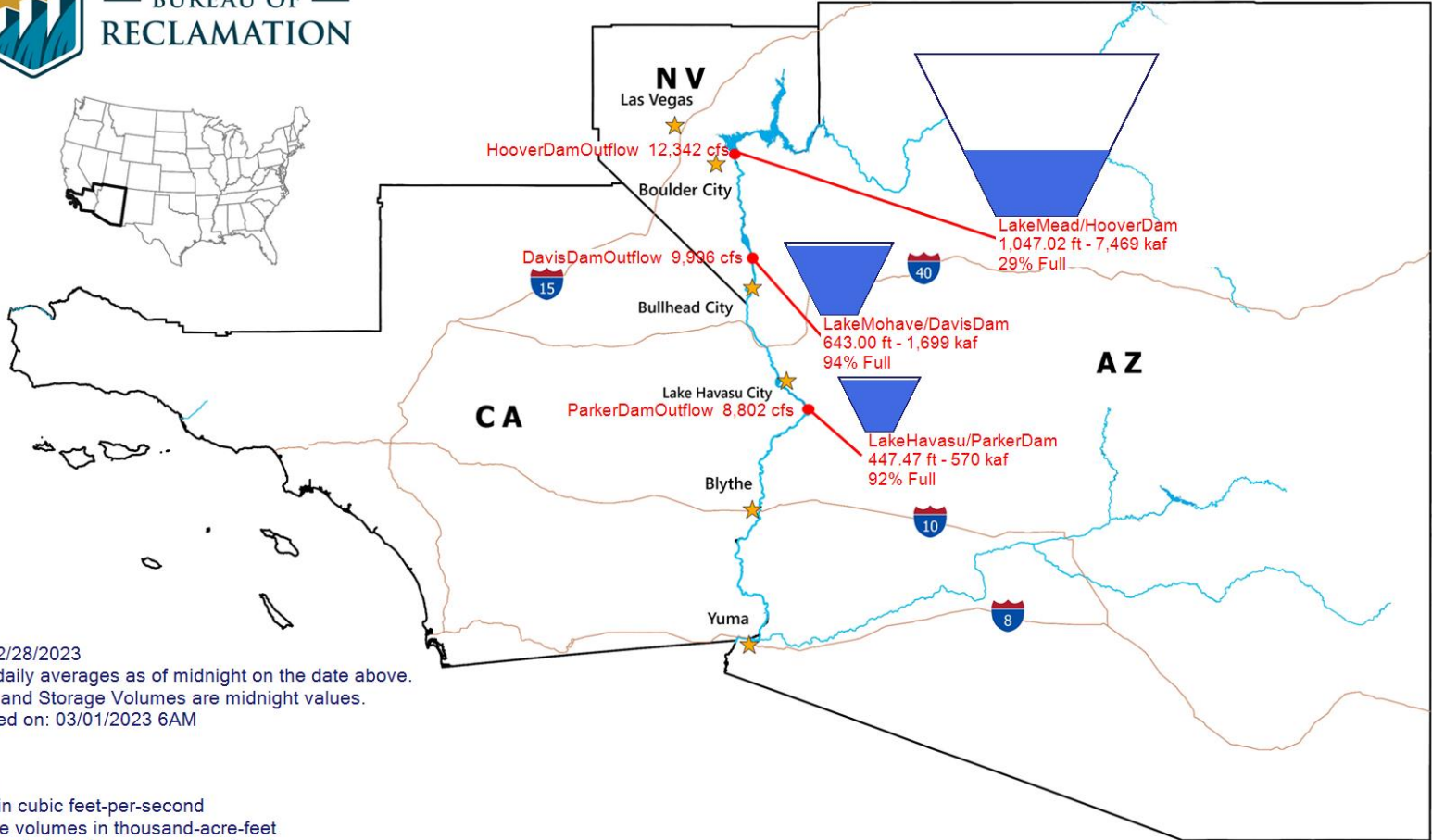
Upper Colorado River Drainage Basin Tea Cup Diagram



Lower Colorado River Basin Tea Cup Diagram



BUREAU OF RECLAMATION

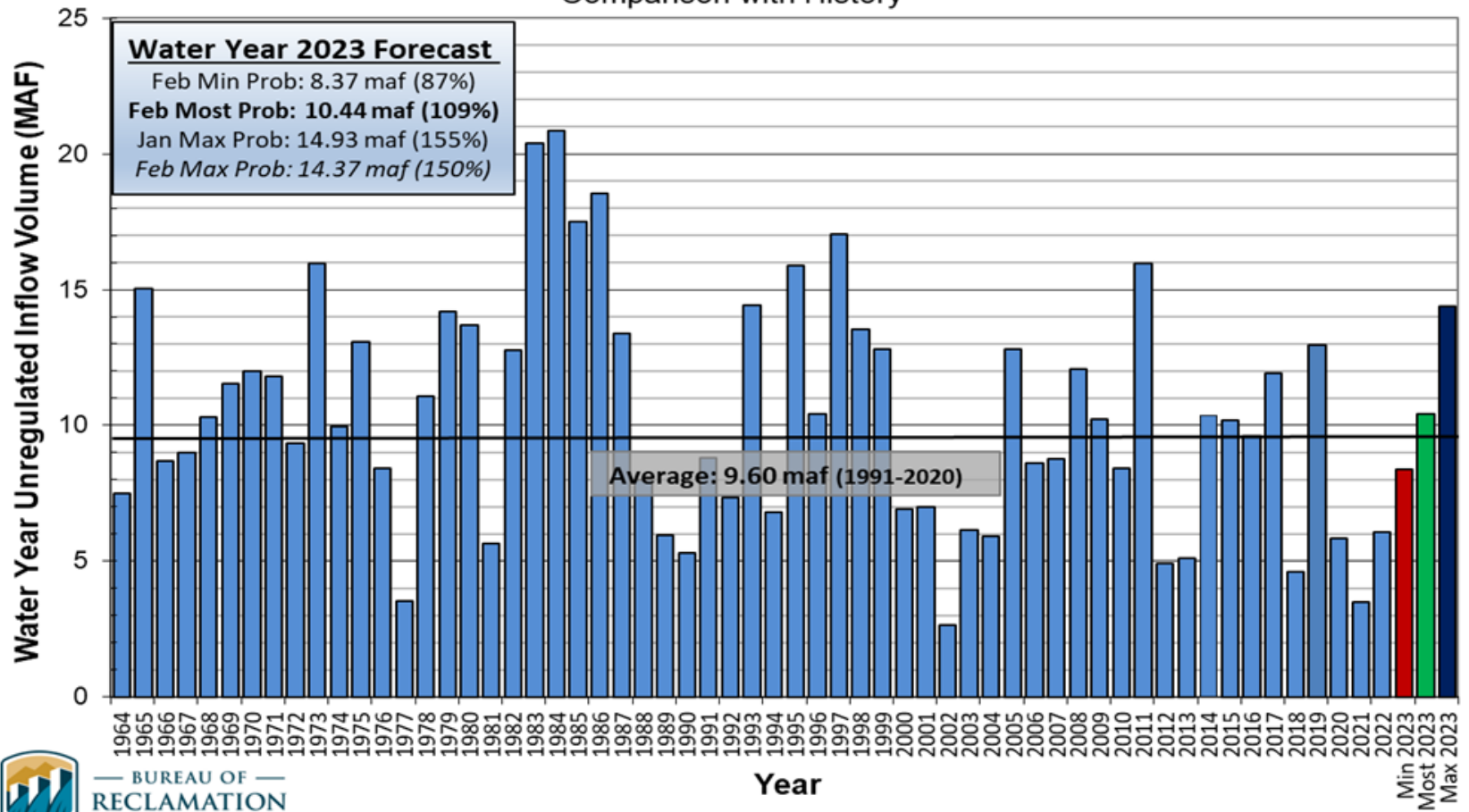


Data for: 02/28/2023
Flows are daily averages as of midnight on the date above.
Elevations and Storage Volumes are midnight values.
Last updated on: 03/01/2023 6AM

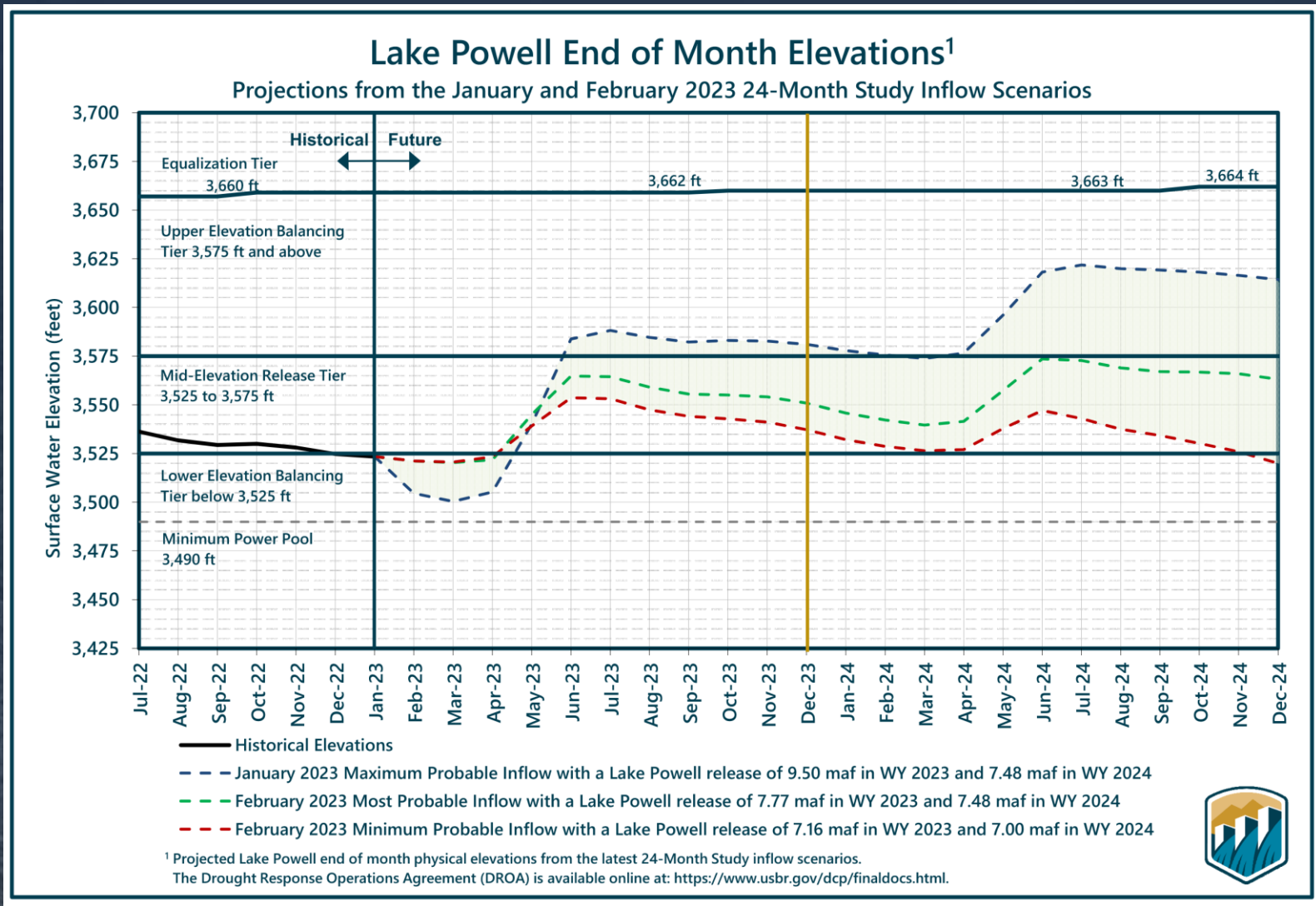
LEGEND:
cfs: Flows in cubic feet-per-second
kaf: Storage volumes in thousand-acre-feet
ft: Elevations in feet above mean-sea-level

Lake Powell Unregulated Flow

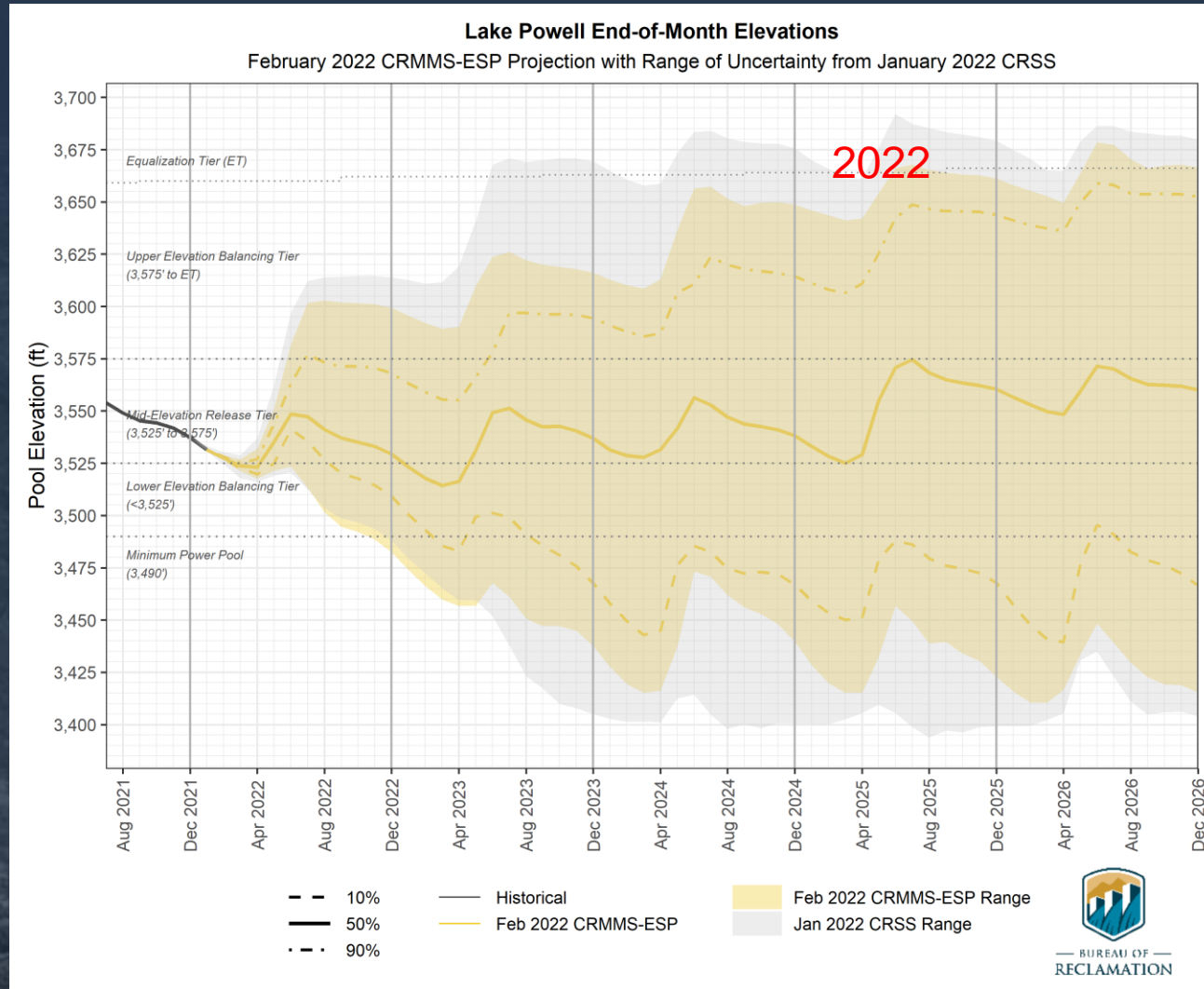
Lake Powell Unregulated Inflow
Water Year 2023 Forecast (issued February 3)
 Comparison with History



Lake Powell End of Month Elevations

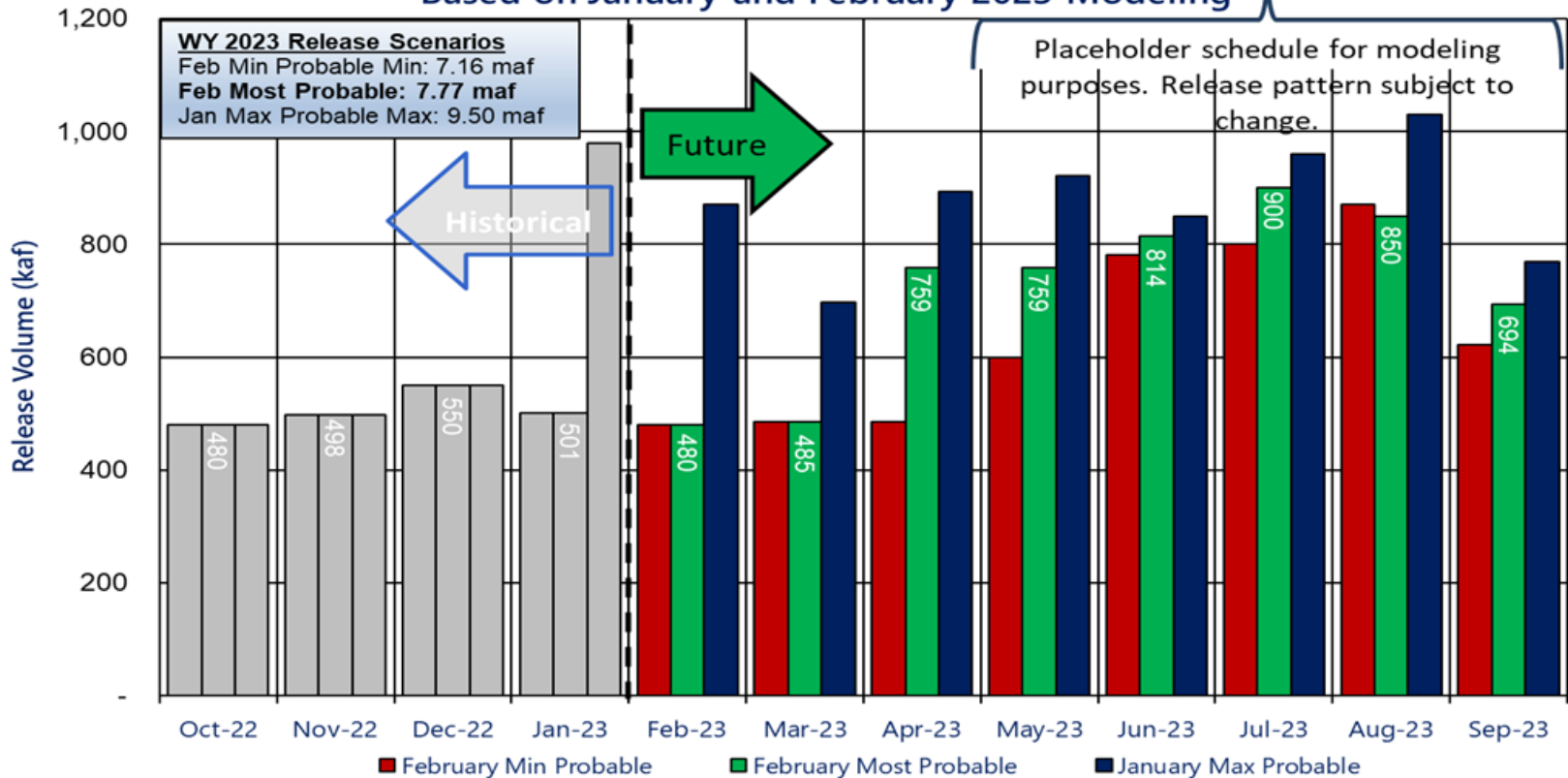


Lake Powell End of Month Elevations – 5 Year



Lake Powell Month Release Volume

Potential Lake Powell Monthly Release Volume Distribution
 Release Scenarios for Water Year 2023
 Based on January and February 2023 Modeling



Consistent with the provisions of the 2007 Interim Guidelines, and to preserve the benefits to Glen Canyon Dam facilities from 2022 Operations into 2023 and 2024, Reclamation will consult with the Basin States on monthly and annual operations. Reclamation will also ensure all appropriate consultation with Basin Tribes, the Republic of Mexico, other federal agencies, water users and non-governmental organizations with respect to implementation of these monthly and annual operations.

-
- Questions?
 - Comments?